

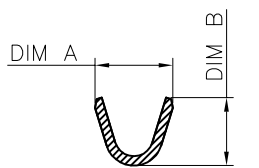
- NOTES:
1. MATERIAL: PHOSPHOR BRONZE, THICKNESS 0.12±0.01.
  2. PLATING: 50u" MIN NICKEL UNDER PLATING OVERALL  
L: 80u" MIN PURE TIN PLATING OVERALL  
1: GOLD FLASH ON PLATING AREA.
  3. COMPONENT LOAD PER REEL: 10K PCS.
  4. SPEC. PLS. REFER TO PS-51457-XXXX-XXX
  5. WIRE RANGE:  
51457-Txxx-001: AWG#30~32  
51457-Txxx-002: AWG#32~36
  6. INSULATION O.D: 0.28~0.50mm.
  7. PART NUMBER

51457-T X X X-XXX  
 TYPE \_\_\_\_\_  
 O: NONE

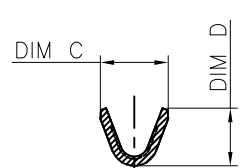
XXX	DIM A	DIM B	DIM C	DIM D
001	1.07	1.08	1.03	0.90
002	1.03	0.87	0.88	0.74

PLATING  
 L: 80u" MIN PURE TIN PLATING  
 1: GOLD FLASH

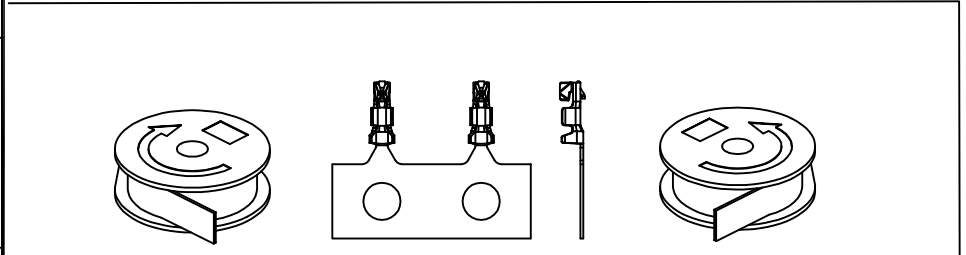
MATERIAL  
 1: PHOSPHOR BRONZE



SECTION X-X



SECTION Y-Y



WIND OPERATION AFTER  
 PLATING AND BEFORE  
 ASSEMBLY

WIND OPERATION AFTER  
 STAMPING AND BEFORE  
 PLATING

<b>QUALITY SYMBOLS</b> MAJOR Ⓢ CRITICAL Ⓢ <b>GENERAL TOLERANCES</b> (UNLESS SPECIFIED) X ±0.5 .X ±0.25 .XX ±0.15 .XXX ±0.1 ANGLES ±2°	DRAWN BY YanJinXiu	DATE 21/03/04	
	CHECKED BY BRAVE	DATE 21/03/04	
	APPROVED BY BRAVE	DATE 21/03/04	DWG NO. 51457-TXXX-XXX
	UNITS mm		SIZE A4
	SCALE 1:1	SHEET NO. 1 OF 1	REV C
			PART NO. SEE NOTES